



Churchill Road

Earls Barton, Northamptonshire

oriordanbond
SALES & LETTINGS



Churchill Road

Earls Barton
NN6 0RE

Price
£325,000

O'Riordan Bond is delighted to bring the market this rarely available Westbury built three bedroom detached family home, offered for sale with no onward chain. Located is the sought after location of Churchill Road, within walking distance to the centre of the village, set on a lovely plot with good size living space.

Accommodation comprises entrance hall with cloakroom/WC off and stairs rising to the first floor, sitting room overlooking the garden, dining room, fitted kitchen with a good range of units, utility room, first floor landing, master bedroom with en-suite, bedroom two being a good size double, bedroom three and a family bathroom. Outside is a mature front garden with lawn area and driveway providing off road parking for two cars leading to an integral garage with light and power. To the rear is a good size enclosed garden with patio, steps to lawn area with mature planting and summerhouse. Further benefits include gas radiator heating and uPVC windows. (B/1029/M)

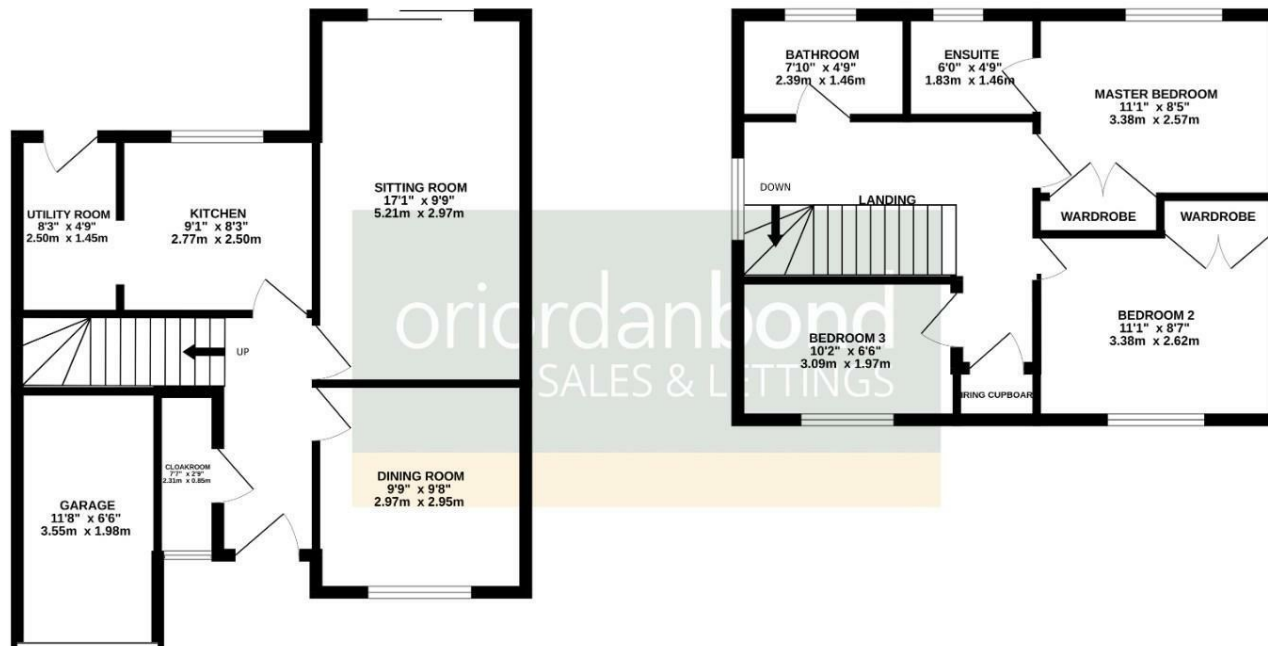
- Rarely available three bedroom detached home
- En-suite to master bedroom
- Two reception rooms
- Enclosed rear garden
- Driveway and integral garage
- No onward chain





GROUND FLOOR
576 sq.ft. (53.6 sq.m.) approx.

1ST FLOOR
453 sq.ft. (42.1 sq.m.) approx.



TOTAL FLOOR AREA: 1029 sq.ft. (95.6 sq.m.) approx.

Whilst every attempt has been made to ensure the accuracy of the floorplan contained here, measurements of doors, windows, rooms and any other items are approximate and no responsibility is taken for any error, omission or mis-statement. This plan is for illustrative purposes only and should be used as such by any prospective purchaser. The services, systems and appliances shown have not been tested and no guarantee as to their operability or efficiency can be given.
Made with Metropix ©2025



Additional information

- Council Tax Band: D
- Energy Efficiency Rating: D

Viewing

Viewing strictly by appointment – details below

Disclaimer

O'Riordan Bond Estate Agents Limited has not tested apparatus, equipment, fittings or services and so cannot verify they are in working order. The buyer is advised to obtain verification from their solicitor or surveyor.

O'Riordan Bond Earls Barton Sales

01604 810088

earlsbarton@oriordanbond.co.uk

